

Multidimensional scaling plot

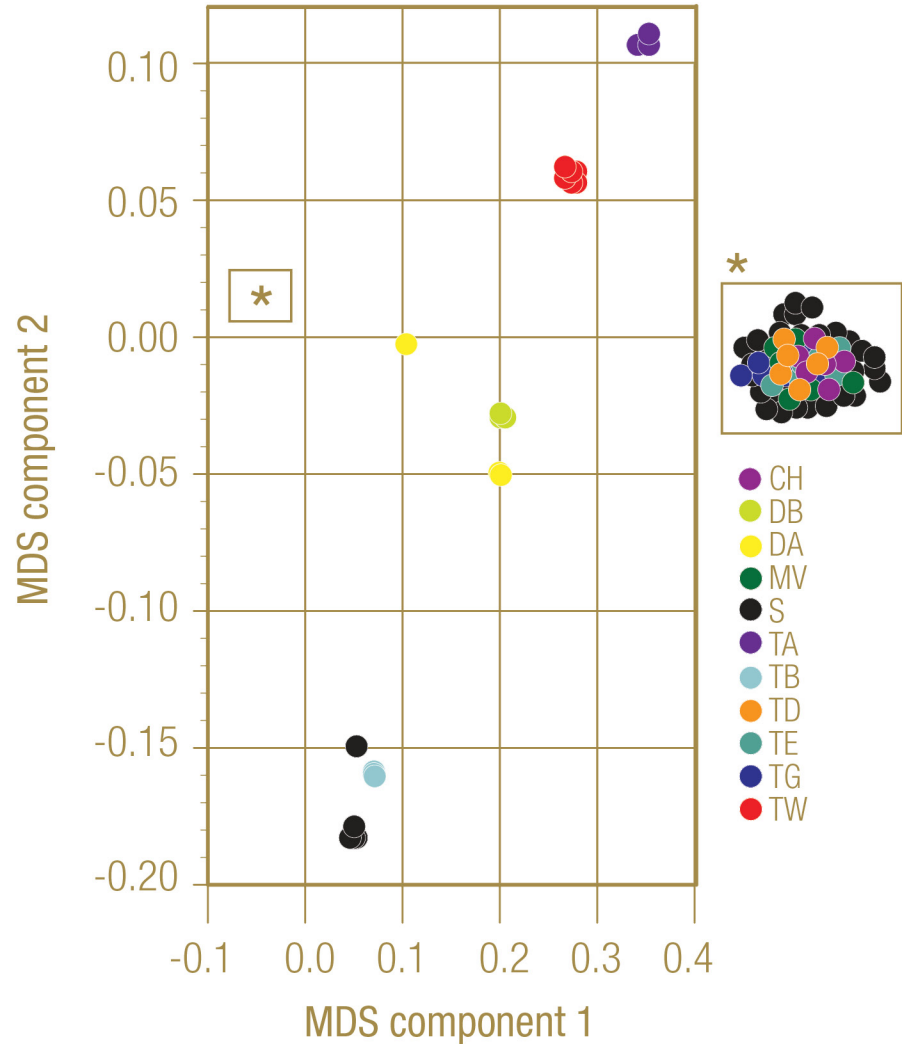


Figure 4. Multidimensional scaling plot (MDS) of nucleotide variants from 55 samples represented by black and colored dots: 47 off-type and desirable ultradwarf bermudagrasses sampled from golf course putting greens; six hybrid bermudagrass cultivars (Champion, MiniVerde, Tifdwarf, TifEagle, Tifgreen and Tifway); and two progenitor species (*Cynodon dactylon* and *C. transvaalensis*). The small box within the graph denotes the region where the majority (32) of off-type and desirable samples from golf course putting greens and ultradwarf cultivars are clustered. Samples in this region are considered genetically similar.